

SJT-ZPC-P1A/B Programmable Safety Circuit Board

(For advanced door opening, releveling safety circuit,
and unintended car movement detection device)

User

Manual

version V1.1

Contents

D

D

D

D

1. Introduction

G

1 Releveling Function

D

2 Advanced Door Function

D

3 UCMP Detection and Brake Triggering

D

4 Door Lock Short-circuit Detection

D

2. Specification Definition

2.1 Product Appearance

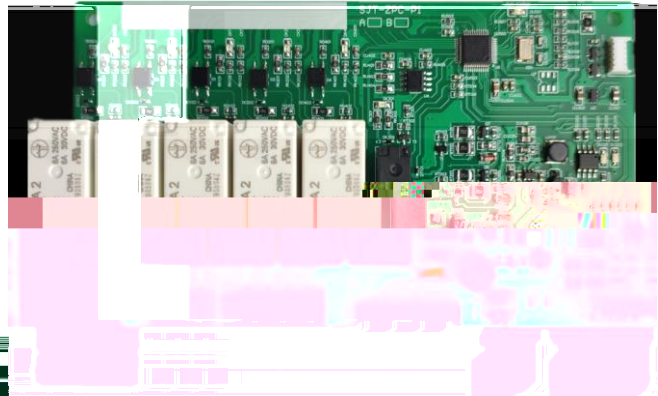
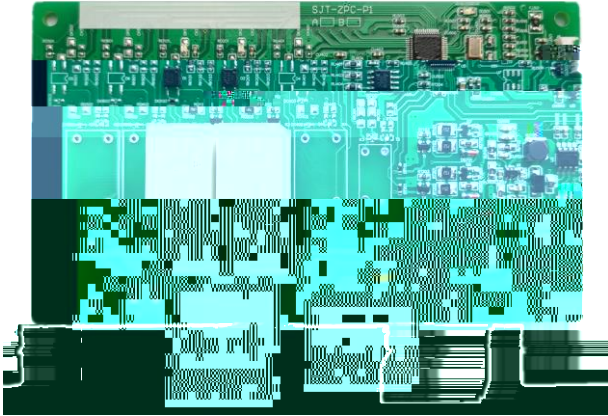


Figure 2.1 the product Appearance of SJT-ZPC-P1A

Figure 2.2 the product Appearance of SJT-ZPC-P1B

2.2 Dimension

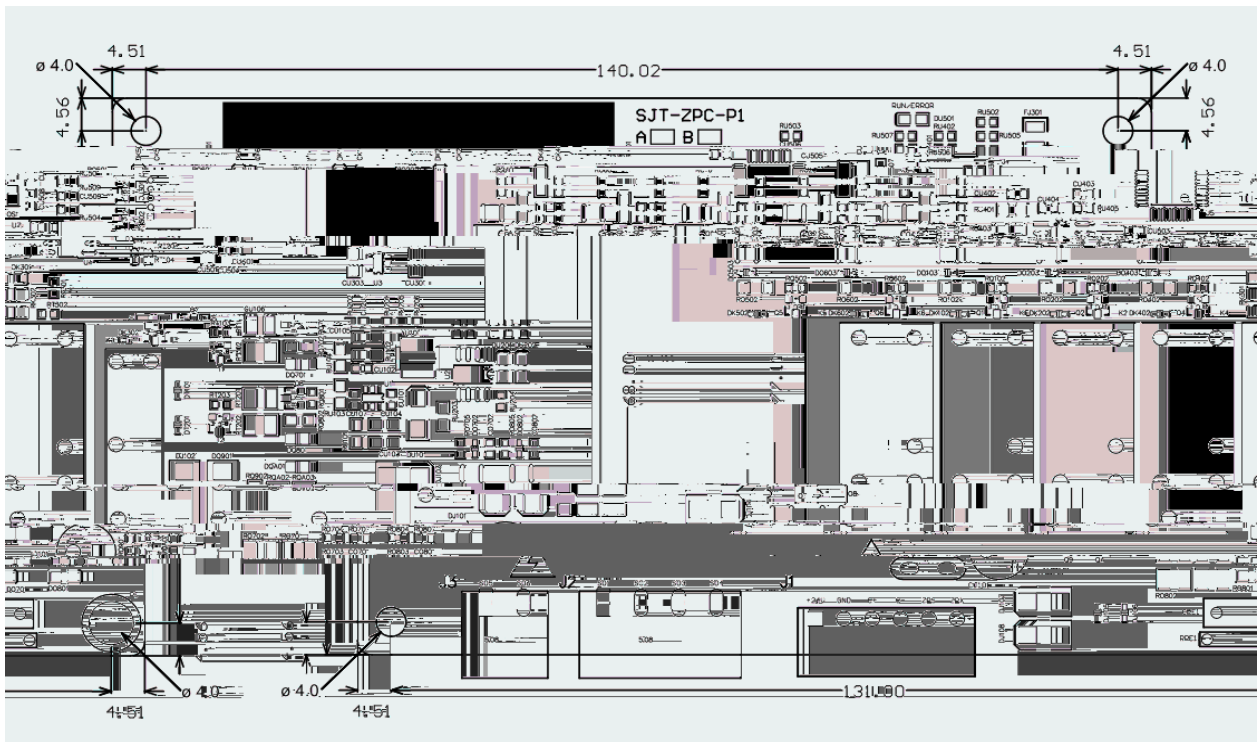


Figure 2.3 Dimension (Unit: mm)

2.3 Terminal Description

Table 2.1 Terminal Descriptio

Table 2.3 Indicator Description

Name	Meaning	Description
DK101	D	G
DK201	D	G
DK301	D	G
DK401	D	G
DK501	D	G
DK601	D	G
DO701	G D	G
DO801	D	G
DU201	D	
DU202	D	
RUN/ERROR	D	

3.2 Sensor Installation

-
- G
-
- G

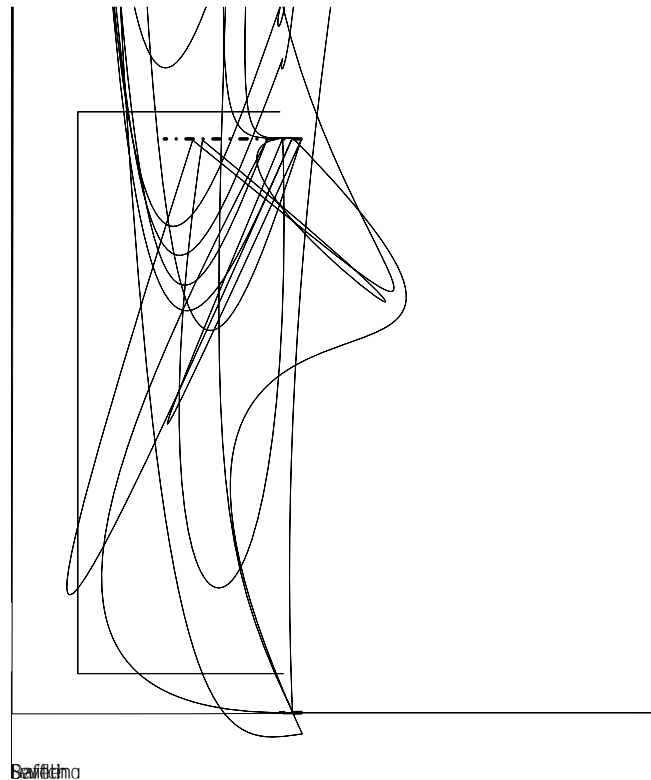


Figure 3.3 The Installation of Door Zone Sensor

Attention

1. The distance of S1 should be greater than 40 mm and less than 50 mm. If the installation distance of S1 exceeds 50 mm, it may affect the braking distance in the event of unintended car movement.
2. The distance of S2 should be greater than 20 mm to avoid mutual interference between the ZPS and ZPX magnetic induction switches, which could cause false activation.

5. Replacement Instructions

The SJT-ZPC-P1A and SJT-ZPC-P1B Programmable Safety Circuit Boards can replace our company's SJT-ZPC-V2A (VM1) Safety Circuit Board. The specific differences and replacement methods are as follows:

5.1 Dimensional Differences

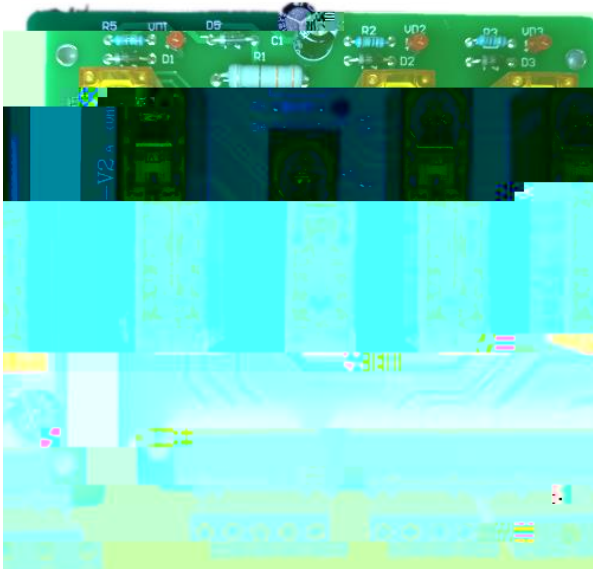


Figure 5.1 Physical Image of SJT-ZPC-V2A(VM1)

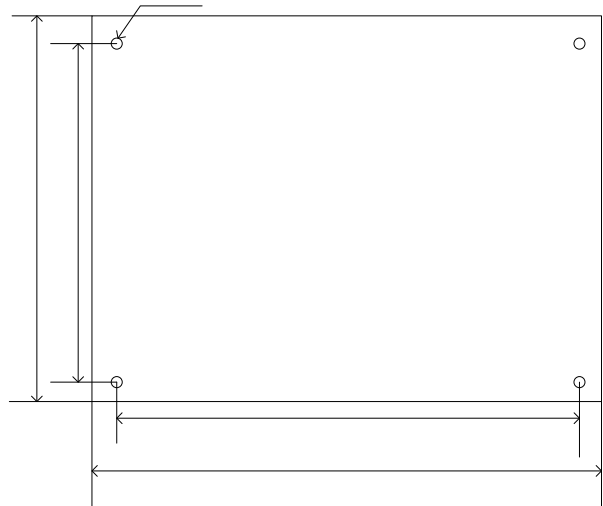


Figure 5.2 Dimensional Drawing of SJT-ZPC-V2A(VM1) (Unit mm)

5.2 Change Instructions

-

Applicable only to synchronous motor systems with single-door				

